

Is the service confidential?

YES! We will not share your information with anyone unless you tell us we can. The only exception to this would be because we have a specific concern about a child's safety.

We do not give priority to any particular impairment, disability or special educational need, nor do we campaign for any particular approach to education.

Contact details



Email: SENDpartnership@halton.gov.uk



Telephone: 0151 511 7733



Find us on facebook

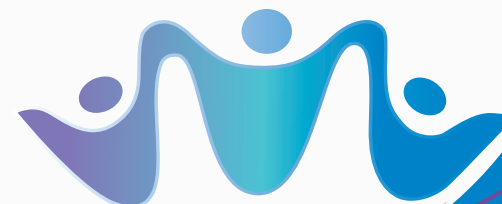
About Halton SEND Partnership – Information, Advice and Support Service

The Children and Families Act 2014 says that local authorities must provide information advice and support about special educational needs (SEN), disability, health and social care for children, young people, parents and carers. This means that every local authority should provide an information, support and advice service that is free, easy to access and confidential and that can help children, parents and young people take part in decisions that affect their lives.

Each local Information, Advice and Support Service is supported by the Information, Advice & Support Services Network who set minimum standards which each local service is expected to meet. The IASS Network is funded to provide this support by the Department for Education.

**Information,
Advice & Support
Services Network**

Halton SEND Partnership



Information, Advice & Support Service

Special Educational Needs & Disability

Helping children, parents, carers and young people to take part in decisions that affect their lives.



Halton SEND Partnership is here for you!

- Young people with Special Educational Needs and Disability.
- Parents and carers of Children and Young People who have Special Educational Needs and Disability.

If you need information, advice, guidance or support on any issues that are affecting your own, or your child's education then we're here to help. Our service is free, impartial and confidential.

How do we do it?

We provide unbiased information and advice about:

- The Law surrounding Special Educational Needs and Disability
- Halton Borough Council's policies and procedures and the policy and practice in schools and other settings.

Sometimes information alone is not enough. You may want help to gather information, make sense of it and apply it to your own situation.

We offer advice by telephone, email, face to face and through work with groups or in training.

We can also offer more intensive support if you need it. This can include helping with letters, accompanying you to meetings or supporting you in discussions with the local authority, school or other setting.

By being impartial we aim to help parents/carers, children and young people to have clear, accurate and relevant information. This will help you to take part in decisions about your own lives. We offer accurate, up to date and impartial resources and information about the law on special educational needs and disability. This covers:

- National and local policy
- The Halton SEND Local Offer
www.halton.gov.uk/localoffer
- Your rights and choices
- Your opportunities to participate
- Where you can find help and advice
- How you can access this support.
- How you can share your compliments, complaints and comments with schools, settings and services.

When we are not able to help we will do our best to tell you about, or put you in touch with, other groups or organisations that can help. We call this signposting.